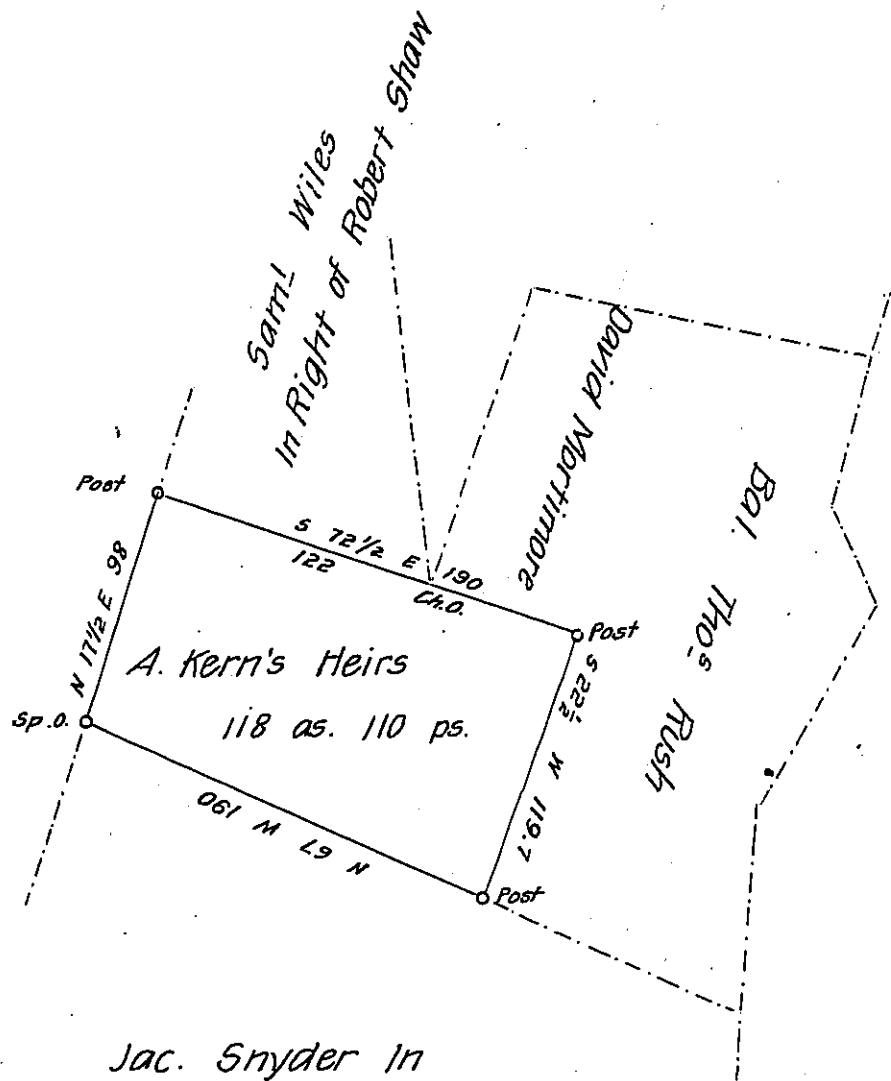


Thos. Stapleton



Jac. Snyder In Right of Peter Shirley

Situate on the West Side of ~~Burnie~~ Tusseys Mountain In Snake-spring township (formerly Providence) Bedford County Containing 118 acres 110 perches and the usual allowance of Six per Cent for Roads. Surveyed the 15<sup>th</sup> day of July 1869 for Abraham Kern's Heirs Being a part of a larger tract ~~of~~ Containing 446 as 67 perches and Allowance of Land Surveyed on Warrant to Thomas Rush dated the 18<sup>th</sup> day of May 1794\*

Sam<sup>l</sup> Ketterman C.S.

To J. M. Campbell Esq<sup>r</sup>

S. G.

\* Say March

IN TESTIMONY that the above is a copy of the original remaining on file in the Department of Internal Affairs of Pennsylvania, made conformably to an Act of Assembly approved the 16th day of February, 1833, I have hereunto set my Hand and caused the Seal of said Department to be affixed at Harrisburg, this twenty third day of October 1906

*Isaac R. Brown*  
Secretary of Internal Affairs.